



PORTABLE GAS HOT WATER SHOWER



PRODUCT OVERVIEW

The Bushranger Portable Hot Water Shower allows you the option of instant hot water wherever you go.

Taking only a few minutes to set up, the Bushranger Hot Water Shower offers instant hot water from a water source of your choice. Designed to reduce water consumption, the Bushranger Hot Water Shower uses only 6 litres of water per minute (360 litres/ hour) without compromising shower head pressure. The safety aspects built into the Bushranger unit includes a digital temperature display, max temperature cut out (50°C), instant ignition/no pilot light technology and AS2658 gas compliance.

Whether you're camping caravanning, 4WD driving, boating or even needing to wash the animals, the Bushranger Portable Gas Hot Water Shower is a great solution to having the comforts of home wherever/whenever you need it.



PRODUCT SPECIFICATIONS

Part No	78X02
Description	Bushranger Portable Gas Hot Water Shower
RRP (AUD)	\$460.00 incl. GST
Weight	Approx. 8kg (packaged)
Dimensions	700mm deep x 350mm wide x 180mm tall (packaged)
Barcode	9322046780151
Outer Carton Qty	These items are packaged individually
Gallery Download	http://www.bushranger.com.au/downloads/Gas-Hot-Water-Shower.zip

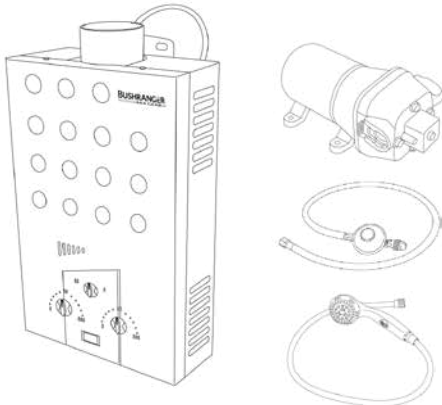
BENEFITS/FEATURES

QUICK AND EASY SETUP

- Easily connectable components make set-up simple.
- Easy to use with clearly labelled controls.
- Uses LPG gas as used in BBQ's etc.
- Easy to use water drain for pack-up.
- Shower Rose with multiple spray patterns and on/off switch.
- Digital temperature display.

INSTANTANEOUS PORTABLE HOT WATER

- Does not require mains power to operate.
- Town water OR clean potable water can be used.
- Heat exchanger only requires Two 'D' cell batteries to operate.
- Heats 360 litres of water per hour.
- Water saving flow of only 6 Litres per minute.



OVERALL SPECIFICATIONS

- Maximum water flow: 6 lpm (litres per minute)
- Gas flow regulated: 2.0 kg/h
- Multiple pattern shower rose with On/Off Switch
- Overall kit weight: 7.15kg
- Pump Type: Diaphragm pump
- Manufactured and certified to strict Australian Standards: AS2658
- Fully approved LPG hose and regulator.
- 50°C Maximum temperature safety sensor with digital read out.
- No water flow burner cut-out safety sensor.
- Flame failure safety device.

VERSATILE APPLICATIONS

- Great for hot showers and washing up when camping/fishing/beach trips or just after that muddy recovery.
- Hot water for workers in remote areas.
- Great for washing animals such as horses and dogs.
- Can be used for (outside) remote cabins and huts.

RELIABLE with SAFETY FEATURES

- Manufactured and certified to strict Australian Standards: AS2658
- Numerous safety features including water flow and temperature sensor.
- Maximum water temperature shutoff. The burners will shut off if the outlet temperature exceeds 50 degrees.
- Has no pilot light that can be accidentally extinguished.
- Flame failure safety device.
- Automatic, electronic gas ignition.
- Heat exchange is commercial grade for optimum performance and durability including stainless steel face plate.
- Warranty:
 - One year warranty.
 - Heat exchanger has a 5 year warranty.

KIT INCLUDES

- LPG portable water heater.
- Gas hose & regulator.
- Two 'D' Cell batteries.
- Diaphragm (water) pump - 12VDC 8A.
- Shower rose with hose.
- Gas inlet adaptor.
- Two male quick connector hose adaptors.
- Pump suction Inlet strainer.

KIT REQUIRES *(Items may vary for your specific application)*

- Town water or potable water source.
- LPG Gas.
- 12 V DC 8A Power Supply (for water pump).
- Wiring harness (for pump).
- Pump inlet/outlet hoses.
- Other peripherals may be required based on your application.

Further information is available from Darren Hellmund or Evan Black on the contact details below.