

Gough Plastics' Tuff-A-Gear Catalogue



T900 Highline
FBOX804.9000H

1000L Cube
FMAM300.1003

T1200 Lowline
FBOX804.1200L



T900 Lowline
FBOX804.9000L

T450
FBOX802.6400

Cabin-Box
FBOX804.0175

T1200 Highline
FBOX804.1200H

DOCUMENT BOX

- Used for storage of documents on vehicles.
- Strong and robust with a water and dust resistant seal.
- Lid secured with bungy straps and hinges.

FBOX805.0000



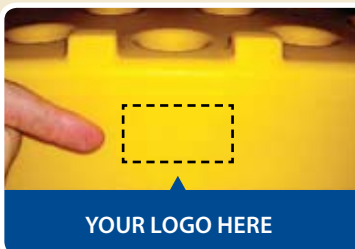
**ASK US ABOUT
CUSTOM
FABRICATION**

No job is too big
or too small for our
highly skilled team!



MOULD-ON GRAPHICS

Your company logo can be incorporated into the product using tough, mould-on graphics. Your company logo could be on each product for promotion and security identification. Graphics are indelibly marked onto the product. They will not peel, crack, smudge or fade. They will last as long as the product!



YOUR LOGO HERE

25L WATER TANK WITH HAND-CLEANER BOTTLE



- Universal right or left hand mounting
- Hand-cleaner and filler are mounted on side faces of tank for easier access
- High quality brass fittings throughout
- Your company logo can be added

Length: 580mm
Width: 210mm
Height: 420mm
FBOX406.3003



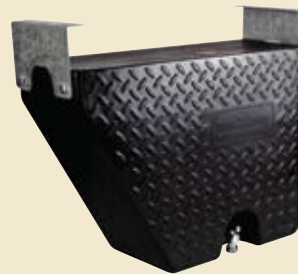
24L UNDERBODY WATER TANK



- Filler bung on each end
- Easy-fit bracket

Length: 425mm
Width: 205mm
Height: 309mm
FBOX401.2500

30L CHECKERPLATE WATER TANK



- Suits most traybacks and trailers
- Standard end brackets supplied
- Checkerplate surface

Length: 580mm
Width: 210mm
Height: 420mm
FBOX401.3001
FBOX401.3002

27L UNDERBODY WATER TANK



- Suits most traybacks and trailers
- Choice of standard end brackets or galvanised carrier

Length: 440mm
Width: 260mm
Height: 400mm
FBOX401.2700
FBOX402.2705

40L UNDERBODY WATER TANK



- Suits most traybacks and trailers
- Standard end brackets supplied

Length: 530mm
Width: 260mm
Height: 410mm
FBOX401.4000

70L SLIMLINE WATER TANK



- Tank, tap, filler tube, outlet tube, tap and mounting brackets supplied

Length: 1080mm
Width: 810mm
Height: 115mm
FBOX405.8000

20L TANK



Length: 300mm
Width: 200mm
Height: 480mm
FBOX408.0200

Length: 350mm
Width: 350mm
Height: 550mm
FBOX408.0600

60L TANK

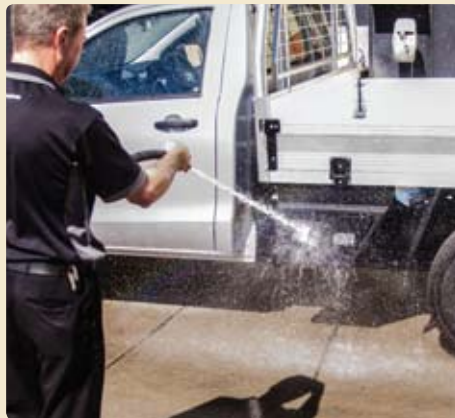


- Multi-purpose • Custom fittings available upon request

*Dimensions may vary by plus or minus 3% due to the rotational moulding process.

*All prices are inc GST, ex -TSV Factory (do not include delivery). Prices may be subject to change without notice.

Tuff-A-Box



24L UNDERBODY TOOLBOX



- Holds ropes, straps, jack, gloves and recovery gear
- Easy-fit bracket

Length: 425mm
Width: 205mm
Height: 309mm
FBOX406.2400

30L UNDERBODY TOOLBOX



- Holds ropes, straps, jack, gloves and recovery gear
- Checkerplate surface

Length: 580mm
Width: 210mm
Height: 420mm
FBOX406.3001
FBOX406.3002

40L UNDERBODY TOOLBOX



- Holds ropes, straps, jack, gloves and recovery gear
- Easy-fit bracket

Length: 530mm
Width: 275mm
Height: 410mm
FBOX406.4000

Tag Box



- Universal wall-mounted storage box

Length: 450mm
Width: 150mm
Height: 250mm
FMAM700.0600.01

TRANSPORTER TANKS



ASK US ABOUT A CUSTOM MADE TRANSPORTER TANK

**140 Gal
640L Trans**
Length: 1,220mm
Width: 1,160mm
Height: 735mm
FFAR500.6400
FFAR501.6401

**215 Gal
1000L Trans**
Length: 1,220mm
Width: 1,160mm
Height: 1,050mm
FFAR500.1000
FFAR501.1001

**650 Gal
3000L Trans**
Length: 2,220mm
Width: 1,300mm
Height: 1,500mm
FFAR500.3002
FFAR501.3001

**Frame Heavy-duty
for 3000L Trans**
PARBK10120

*Dimensions may vary by plus or minus 3% due to the rotational moulding process.
*All prices are inc GST, ex -TSV Factory (do not include delivery). Prices may be subject to change without notice.

T900 Lowline and Highline Tuff-A-Box



New Closed Cell Rubber Seal
For improved performance



Checkerplate Top Surface
Giving that modern and rugged look

Thicker Lip
For a stronger edge



New Higher, Rounder Sealing Rim
For excellent water resistance



New Sealed Rivets with Backing Washers
100% leak-proof and extra tear-out strength

Buy online at
www.gough.com.au



Caring for the planet
and its people with a passion

For more information about these great products:

CALL 1800 069 805

833 Ingham Rd, Bohle TOWNSVILLE

Ph: (07) 4758 6400

Fax: (07) 4774 7608

sales@gough.com.au

www.gough.com.au



ARMA Member